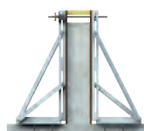
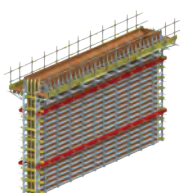
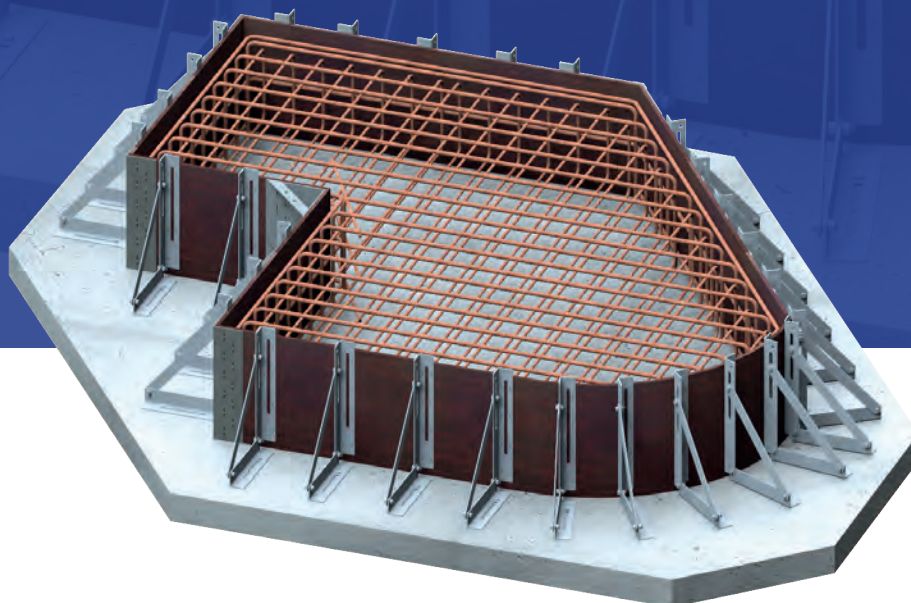


S A F E R ■ F A S T E R ■ G R E E N E R ■ S U S T A I N A B L E

# THE FAST-FORM™ RANGE OF FORMWORK SYSTEMS



ONE SYSTEM • ENDLESS POSSIBILITIES



ONE SYSTEM • ENDLESS POSSIBILITIES

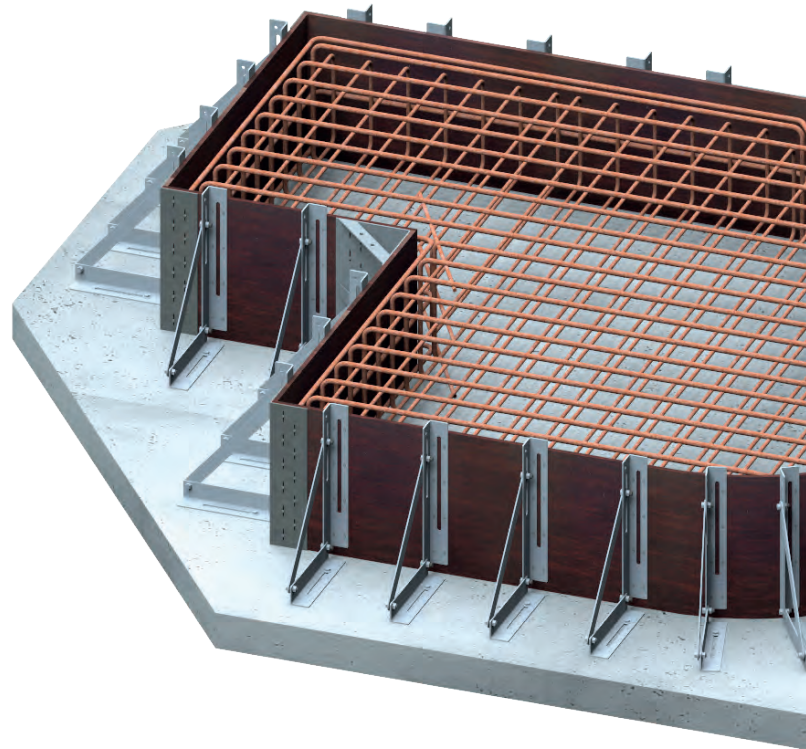
**CANZAC®**  
Under Slab - In Slab - On Slab



**0800 422 692**  
[www.canzac.com](http://www.canzac.com)

# CONTENTS

|  |              |                                    |              |
|--|--------------|------------------------------------|--------------|
| <b>BENEFITS OF FAST-FORM</b>                     | <b>2</b>     | <b>ROAD FORM SYSTEM</b>            | <b>22-29</b> |
| <b>FAST-FORM CARBON SAVINGS</b>                  | <b>3</b>     | Road Form System Features          | 23           |
| <b>BRACKET AND CAPPING BEAM SYSTEM</b>           | <b>4-13</b>  | Road Form System Benefits          | 24           |
| Bracket Base System                              | 5            | Road Form System Accessories       | 25           |
| Bracket Sizes and Accessories                    | 6            | Road Form Quick Installation Guide |              |
| Bracket System Quick Installation Guide          | 7            | Using Road Pins                    | 26           |
| Brackets Uses 3D                                 | 8            | Bespoke Design and Manufacturing   | 27           |
| Brackets in Use                                  | 9            | Road Form Special Uses             | 28           |
| Fast-Form Sheet Pile Capping System Overview     | 10           | Road Form in Use                   | 29           |
| Bracket System — (Single-sided) Capping Beam     |              |                                    |              |
| Quick Installation Guide                         | 11           |                                    |              |
| Capping Beam Uses                                | 12           |                                    |              |
| Capping Beam in Use                              | 13           |                                    |              |
| <b>FAST-FORM COMPLETE WALL FORMWORK SOLUTION</b> | <b>14-21</b> |                                    |              |
| Fast-Form Wall System Overview                   |              |                                    |              |
| and Components                                   | 15           |                                    |              |
| Sample Wall Drawings                             | 16           |                                    |              |
| Wall System (Double-Sided) — Quick               |              |                                    |              |
| Installation Guide                               | 17           |                                    |              |
| Radius Wall System — Quick Installation Guide    | 18           |                                    |              |
| Aluminium Wall System (Double-Sided) — Quick     |              |                                    |              |
| Installation Guide                               | 19           |                                    |              |
| Wall System Uses 3D                              | 20           |                                    |              |
| Wall System in Use                               | 21           |                                    |              |





ONE SYSTEM • ENDLESS POSSIBILITIES

## BENEFITS OF FAST-FORM™

A unique system of components that bolt together and so can be fitted by hand or in the case of our wall systems lifted in large panels with a crane.

Fast-form is so simple to use that anyone can fit it and it's flexibility means it can be used for almost any application.

Manufactured from galvanised steel, it is both strong and durable and will last for more than 25 years. The benefits over traditional formwork methods are immense with savings in materials, time and costs — not to mention the environmental benefits.

Our team of designers and structural engineers offer full colour 3D drawings, structural calculations and temporary works drawings, all included in our service.

### KEY BENEFITS

**ECONOMY:** Faster than traditional forms and a cost effective alternative to panel systems.

**MULTI USE:** From beams, slab and walls to sheet pile capping beams and much more. Fix to ground, or site concrete, steel or plywood and brackets bolt together to allow you to cast complex shapes in one pour. Wall system can be hand fit or crane lifted.

**SAFETY:** Access, handrails and toe boards, lightweight system that can be easily fitted by hand quickly and safely.

**SPEED:** Less make up, no de-nailing, lightweight and easy to use system much faster than traditional methods and very simple to use with low labour skill levels required.

**COST:** Less expensive than timber with reduced labour and plant costs, made from galvanised steel, is very strong and won't rust and is easy to transport.

**ENVIRONMENTAL:** Little or no timber wastage and 100% fully recyclable materials, greatly reduced carbon emissions from not only from use of our system but also reduced emissions from deliveries.

**BETTER FINISH:** We offer the best finish on the market meaning less remedial works, plywood is fixed from behind so no marks on face of the concrete and you can use any grade plywood you need.

**CUSTOMER SERVICE:** We pride ourselves on our commitment to our customers, from fast quote and design turnarounds to our wealth of formwork experience, you are in safe hands.

**DELIVERIES:** On time and reliable deliveries on our own fleet of trucks, we aim to offer the best service possible and all our trucks are tracked.

### LEGAL NOTICE:

Fast-Form™ is the Trade Mark of Fast-Form Systems Ltd and all design, copyright and intellectual property belong to the company.

Fast-Form™ is covered by the following Patents: Granted GB2508263 / GB2533172 Pending GB 1616005.3 /GB 1506126.0 / GB2539371 / EP 3169857/ EP3042009 / CA2957857 / US20160194887 / US20170292280 / PCT/GB2019/050329

## FAST-FORM™ CARBON SAVINGS

Fast-Form's carbon savings are due to our unique long life galvanised steel components, the independent carbon study worked on a lifespan of 15 years, though in reality the system should last 25 years, so the savings could actually be much higher than shown.

Carbon savings on deliveries have not been included in the figures.

All our components are fully recyclable which also contributes to the carbon savings, because at the end of their life our products can be recycled.

Our systems typically weigh 60% less than other systems and so are able to be hand fitted but also as they are lighter, transport costs and so emissions from deliveries are also greatly reduced.

Fast-Form is the very latest in patented formwork technology.

### Carbon SAVINGS KEY POINTS

Carbon use per M<sup>2</sup> on formwork systems:

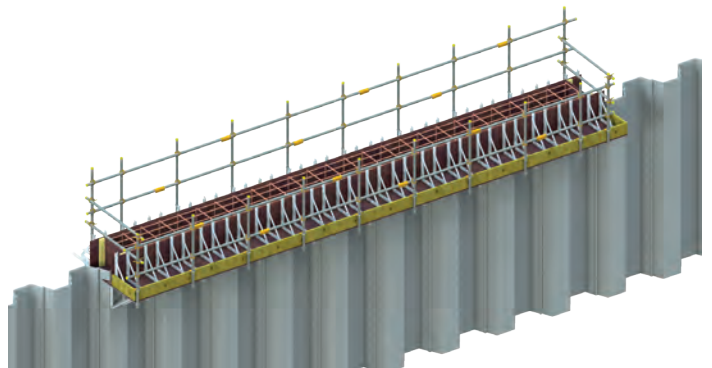
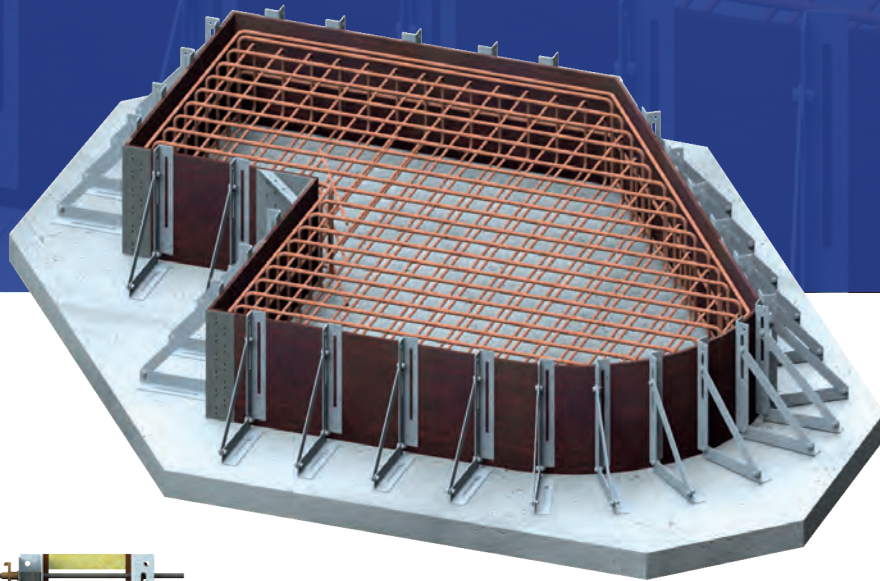
- Traditional timber formwork uses 2.39kg of carbon per M<sup>2</sup>
- Traditional Panel formwork uses 1.39kg of carbon per M<sup>2</sup>
- Fast-Form with a Plywood Face uses 0.43kg of carbon per M<sup>2</sup>
- Fast-Form with Plastic Ply face uses 0.22kg of carbon per M<sup>2</sup>
- Fast-Form uses between 80-100% less carbon per M<sup>2</sup> than Timber systems
- Fast-Form uses on average 60% less carbon per M<sup>2</sup> than other well known panel based systems



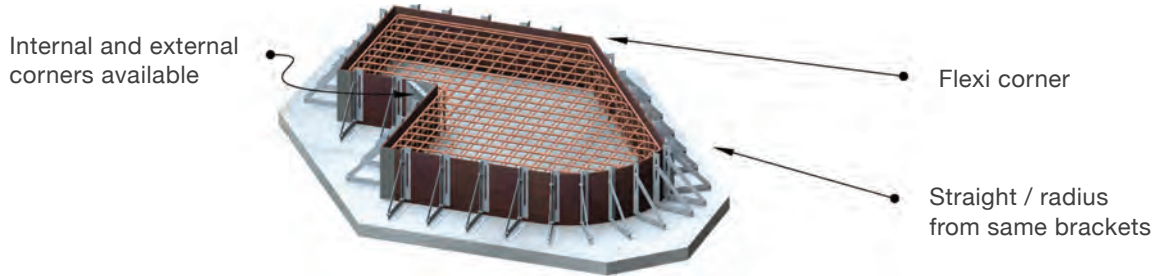
**Ask for your Carbon Saving Certificate –** we can issue you with a certificate showing the carbon savings per contract, ask one of our staff about this innovative scheme.



# BRACKET AND SHEET PILE CAPPING BEAM FORMWORK



## BRACKET BASE SYSTEM



Fast-Form™ is the only formwork system that can truly be erected by hand, largest bracket (1.8m) weighs 20kg.

The system is the **fastest and easiest way** to form bases / slabs (inc soffits) / walls / pits as well as sheet pile capping beams and much more.

**Can be fixed down with anchor bolts into site concrete, road pins into the ground.**

Straight or radius pours and also complex shapes, our brackets bolt together to form almost any type or shape of pour and with standard and flexi corners anything is possible.

Beams and walls up to almost 1.8m high with no form tie required and no patching of form tie holes.

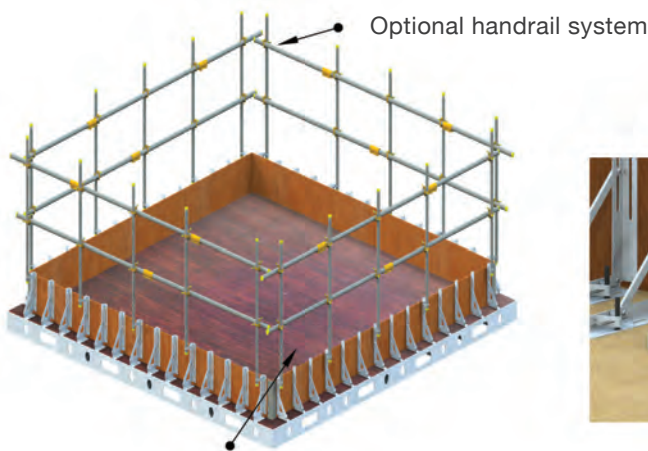
Just fix bracket down 18mm back from pour line / plumb up and screw on ply from behind and pour, its so fast and easy to use.

Straight and radius from same system.

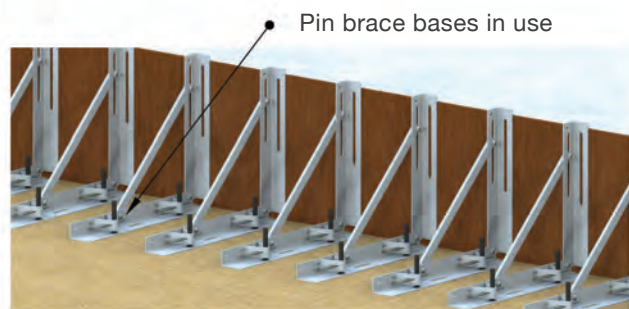
The system also comes with optional full access and handrail system for safe working.

Our unique system is so flexible they can be bolted together to form complex shapes such as slabs with plinths or for sheet pile capping beams / soffits and much more.

**Save time and costs on labour, cranes, reduce your carbon footprint and timber use.**



Brackets fixed with wood screws

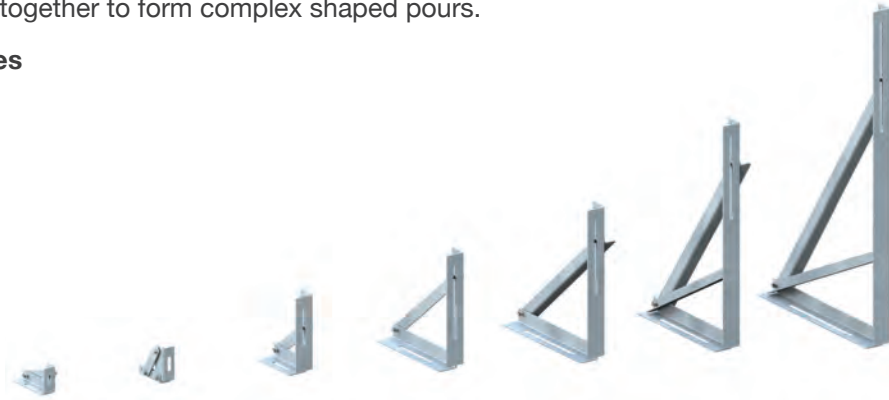


## BRACKET SIZES AND ACCESSORIES

**Standard brackets** can fix to concrete with re-usable self tapping concrete bolts, plywood with wood screws, they can also be bolted together to form complex shaped pours.

### Standard Bracket Sizes

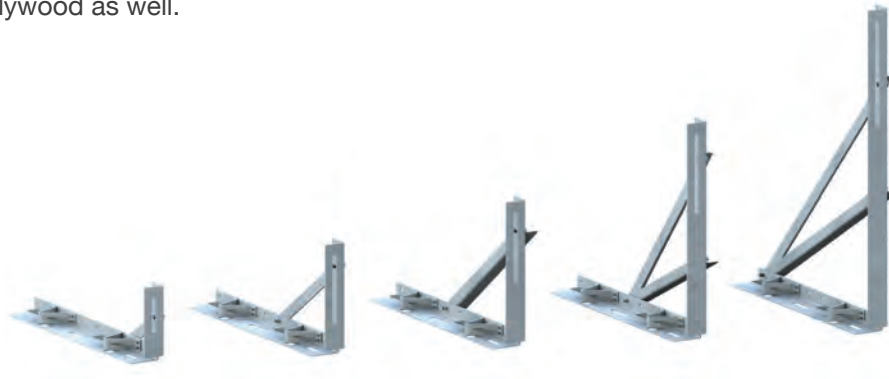
- 140mm
- 190mm
- 440mm
- 640mm
- 840mm
- 1240mm
- 1840mm



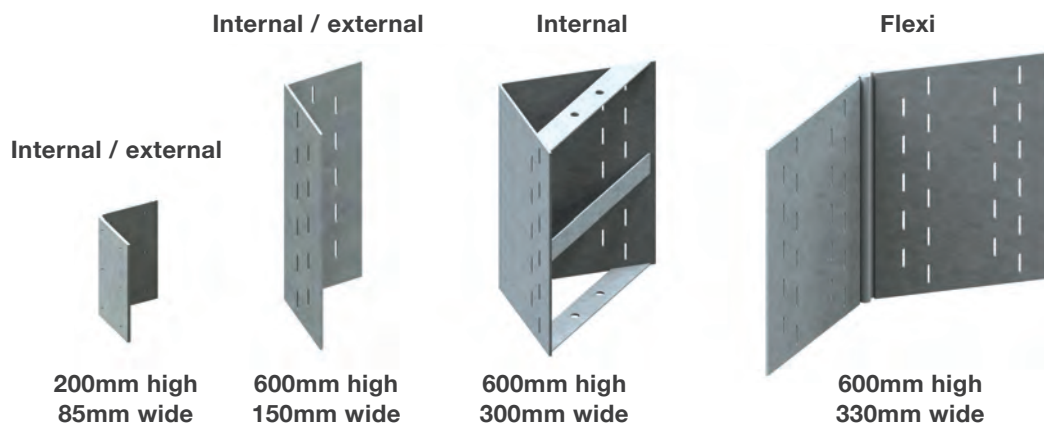
**Pin brace brackets** can be pinned down to earth or hardcore with road form pins but they can also still be fixed down to concrete and plywood as well.

### Pin Brace Sizes

- 440mm
- 640mm
- 840mm
- 1240mm
- 1840mm

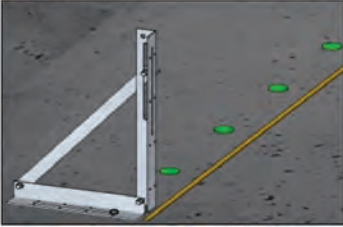


### Corner Accessories



**BRACKET SYSTEM -  
QUICK INSTALLATION GUIDE**

STEP 1



MARK A LINE ALONG CONCRETE POUR AND DRILL HOLES AT REQUIRED CENTRES.

STEP 2



FIX ALL BRACKETS AND ADJUST TO LINE.

STEP 3



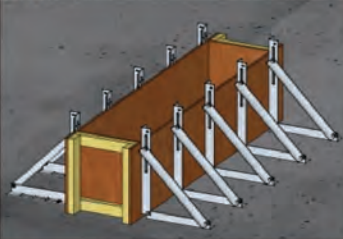
FOR A BEAM CONFIGURATION, REPEAT THE PROCESS ON OPPOSITE SIDE.

STEP 4



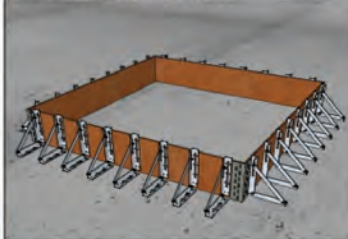
SCREW ON PLYWOOD FROM BEHIND.

STEP 5



ADD STOP-ENDS.

SLAB CONFIGURATION



FOR SLABS SIMPLY FOLLOW ABOVE STEPS AROUND CONCRETE POUR.

**BRACKET SYSTEM -  
FIXING DETAILS**



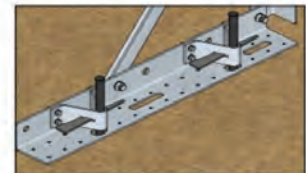
BRACKET FIXED TO CONCRETE USING CONCRETE BOLTS

BRACKET TYPE: 150/A/B/C = 1X CONCRETE BOLT

BRACKET TYPE: D/E = 2X CONCRETE BOLT



BRACKET FIXED TO DECKING USING WOOD SCREWS IN ALL AVAILABLE HOLES



BRACKET FIXED TO HARDWARE USING ROAD PINS [REQUIRES PIN BASE EXTENSION]

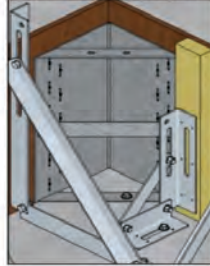
**BRACKET SYSTEM -  
TYPICAL CORNER DETAILS**

EXTERNAL CORNER



BRACKETS POSITIONED MAX. 50MM AWAY FROM A CORNER ACCESSORY - MEASURED EDGE TO EDGE

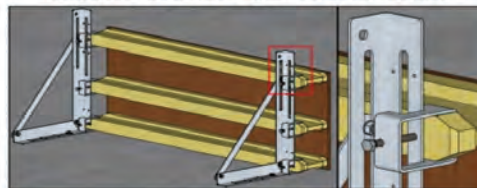
INTERNAL CORNER



BRACKETS POSITIONED MAX. 50MM AWAY FROM A CORNER ACCESSORY - MEASURED EDGE TO EDGE [SMALLER SIZE BRACKET MAY BE REQUIRED TO ACHIEVE THE 50MM EDGE TO EDGE MEASUREMENT]

**BRACKET SYSTEM -  
SUPPORTING OTHER FORMWORK**

BRACKET SYSTEM FIXED TO H20 BEAMS

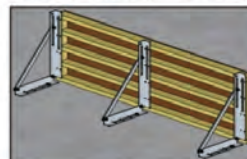


H20 BEAMS USED TO CREATE SHUTTER.

BRACKETS FIXED TO H20 BEAMS USING FAST-FORM BEAM CLAMPS.

BRACKET SPACING: UP TO 1.8M BUT DEPENDENT ON POUR HEIGHT

BRACKET SYSTEM FIXED TO TRADITIONAL TIMBER SHUTTER



BRACKETS CAN BE FIXED TO TRADITIONAL TIMBER SHUTTER USING WOOD SCREWS.

BRACKET SPACING: UP TO 1.8M BUT DEPENDENT ON POUR HEIGHT

PLEASE NOTE THIS GUIDE IS NOT TO BE USED FOR CONSTRUCTION ALWAYS ASK FOR A DETAILED, CERTIFIED CONSTRUCTION DRAWING BEFORE ASSEMBLING YOUR SYSTEM



# BRACKET USES 3D

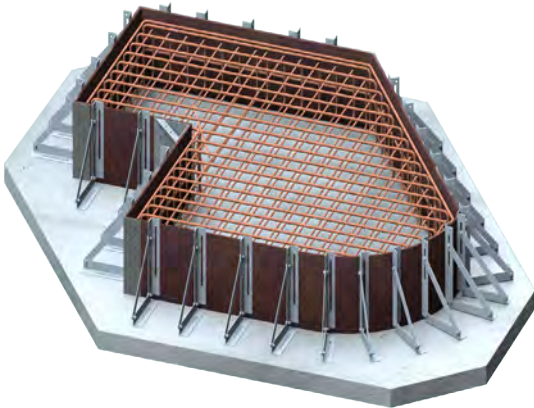
Slab and walls poured in one with single sided one side



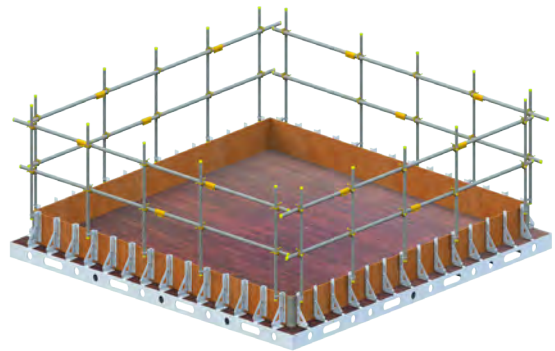
1.8m wall pour with dry tie over top of the pour



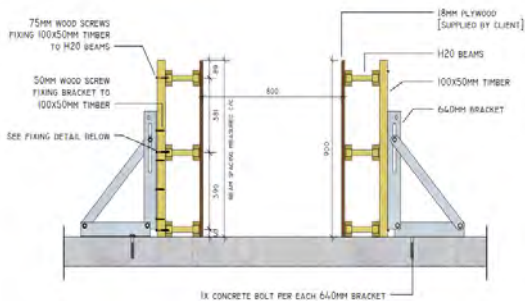
Example of 600mm base with angles, corners and radius



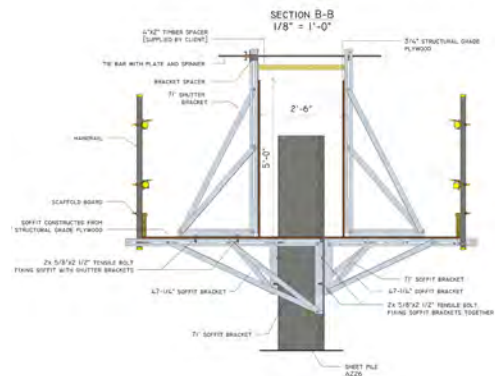
400mm brackets on decking with handrails fitted



Brackets supporting H20 beams at 1.5m centres



1.2m high sheet pile capping beam with brackets used as soffit



**DRAWINGS AND CALCULATIONS ARE AVAILABLE IN METRIC AND IMPERIAL MEASUREMENTS**

## BRACKETS IN USE

St Martins Culvert - Moore Construction

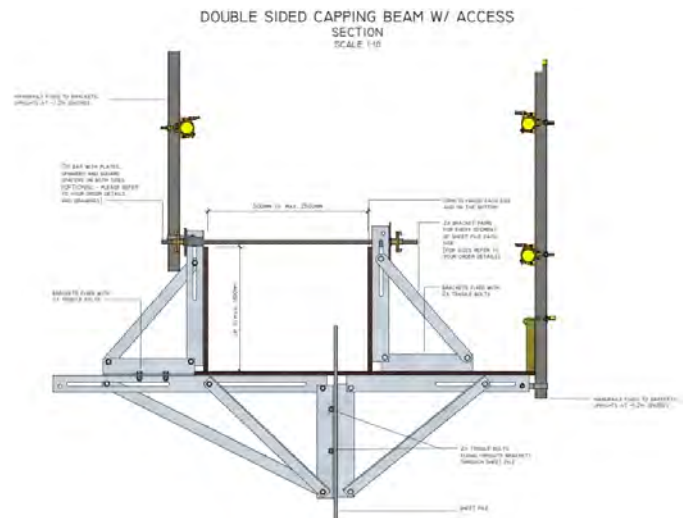
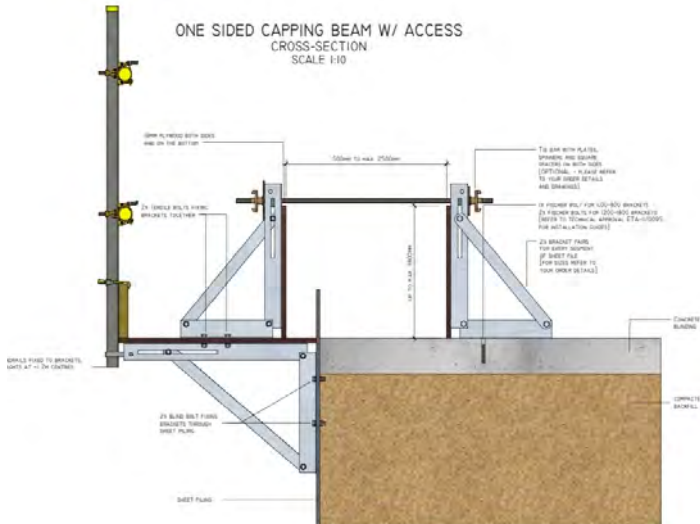


Christchurch Hospital - Moore Construction



WHATEVER THE JOB WE CAN DESIGN A SOLUTION FOR YOU!

# FAST-FORM SHEET PILE CAPPING SYSTEM



Straight, curved or radius, level or sloping, one or two-sided Fast-Form is the only system worldwide that can cope with everything from one system, even including the landside formwork.

We can design beams to any size or type and also offer a bespoke service so no matter how complex your beam, we can offer a solution to suit you needs and your budget.

**Free design service, full calculations and full colour 3D temporary works drawings included.**

Unlike alternative methods Fast-Form not only forms the soffit of the sheet pile capping beam but also the formwork to both sides with all supports saving time and labour costs.

There is no need to make and try to fix additional formwork.

A complete working platform and handrails can also be included for a safe solution that keeps your workers safe and offers a safe and stable platform to work off.

From small sheet pile beams to large complex beams, we offer a safe and cost effective solution.

Fast-Form is flexible enough to cope with all types and sizes of capping beams, the system can be fitted to the pile with bolts or with stud welding, we have several fixing and bolt options available.

Provides full edge protection and a full working access platform,also offer the best finish of any system.

Needs no crane or mechanical lifting and in a lot of cases can be fitted from one side.

We will design your system for you and deliver everything to your site, our system is lightweight meaning transportation costs are greatly reduced.

The only system that forms the whole of the sheet pile capping beam.

Why rent or buy just a soffit system when you can have a complete solution that is **quicker, more efficient and less expensive.**

**BRACKET SYSTEM - SINGLE SIDED CAPPING BEAM QUICK INSTALLATION GUIDE**

**STEP 1**



DRILL A HOLE AND FIX FIRST SOFFIT BRACKETS TO SHEET PILE [SEE FIXING DETAIL 1]

**STEP 2**



REPEAT THE PROCESS UNTIL ALL SOFFIT BRACKETS ARE FIXED.

**STEP 3**



FIX PLYWOOD TO BRACKETS TO CONSTRUCT WORKING PLATFORM/SOFFIT FOLLOWED BY FIXING HANDRAIL.

**STEP 4**



FIX FIRST SHUTTER BRACKETS ON TOP OF SOFFIT BRACKETS [SEE FIXING DETAIL 2] ALONG WITH ADJACENT SHUTTER BRACKETS LOCATED ON LANDSIDE.

**STEP 5**



REPEAT THE PROCESS UNTIL ALL SHUTTER BRACKETS ON BOTH SIDES ARE FIXED.

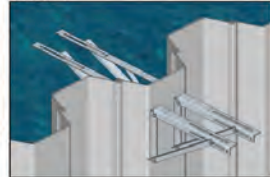
**STEP 6**



FIX PLYWOOD AND STOP-ENDS.

**BRACKET SYSTEM - DOUBLE SIDED CAPPING BEAM QUICK INSTALLATION GUIDE**

**STEP 1**



DRILL A HOLE AND FIX FIRST SOFFIT BRACKETS [SEE FIXING DETAIL 3].

**STEP 2**



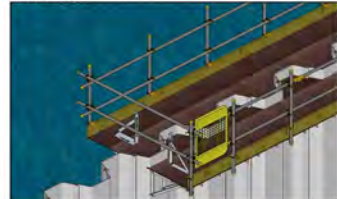
REPEAT THE PROCESS UNTIL ALL SOFFIT BRACKETS ARE FIXED.

**STEP 3**



FIX PLYWOOD TO BRACKETS TO CONSTRUCT WORKING PLATFORM/SOFFIT FOLLOWED BY FIXING HANDRAIL.

**STEP 4**



FIX FIRST SHUTTER BRACKETS ON TOP OF SOFFIT BRACKETS [SEE FIXING DETAIL 2].

**STEP 5**



REPEAT THE PROCESS UNTIL ALL SHUTTER BRACKETS ARE FIXED.

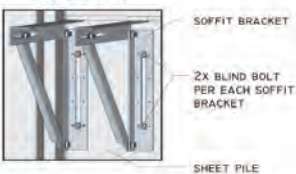
**STEP 6**



FIX PLYWOOD AND STOP-ENDS.

**BRACKET FIXING DETAILS**

**DETAIL 1**



SOFFIT BRACKET  
 2X BLIND BOLT PER EACH SOFFIT BRACKET  
 SHEET PILE

**DETAIL 2**



SHUTTER BRACKET - SOFFIT SIDE  
 2X M16x65MM TENSILE BOLT JOINING SOFFIT WITH SHUTTERING BRACKET  
 SOFFIT BRACKET  
 SHEET PILE

**DETAIL 3**

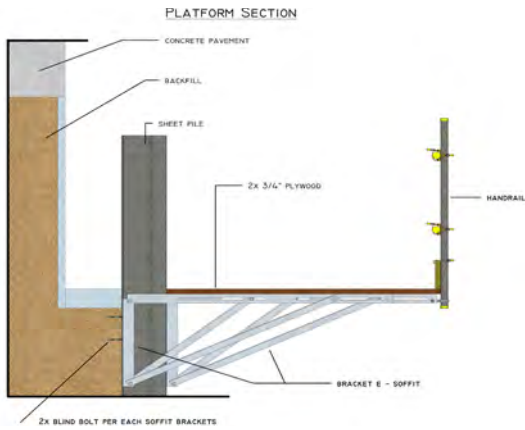


SOFFIT BRACKET 1  
 SOFFIT BRACKET 2  
 2X M16x65MM TENSILE BOLT JOINING SOFFIT BRACKET 1 & 2  
 SHEET PILE

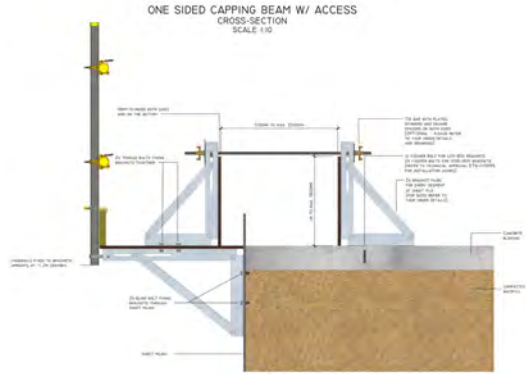
PLEASE NOTE THIS GUIDE IS NOT TO BE USED FOR CONSTRUCTION  
 ALWAYS ASK FOR A DETAILED, CERTIFIED CONSTRUCTION DRAWING BEFORE ASSEMBLING YOUR SYSTEM

# CAPPING BEAM USES

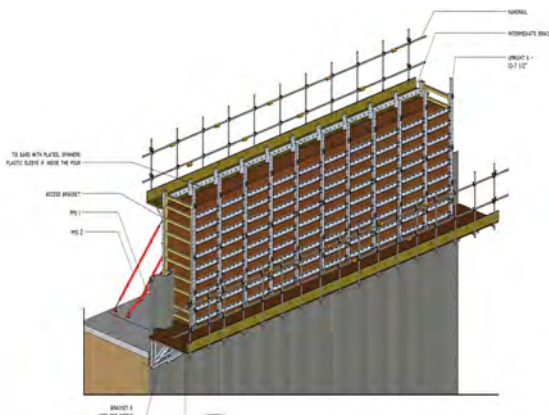
Used as an access platform, on almost any structure



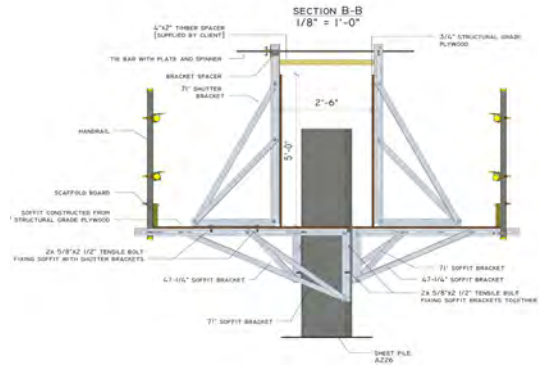
Typical single-sided capping beam with landside form and access



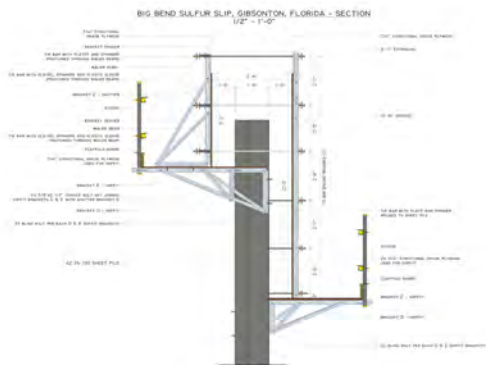
Large wall with access / platform and landside forms



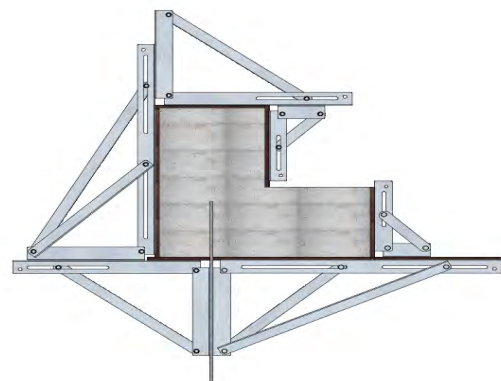
Typical double sided capping beam 1200mm (5') high



Large beam 3m on one side with access platforms both sides



Example of a complex beam cast in one pour



**DRAWINGS AND CALCULATIONS ARE AVAILABLE IN METRIC AND IMPERIAL MEASUREMENTS**

# CAPPING BEAM IN USE

1.8m high beam flood defence



1m high x 2.8m wide beam



Small capping beam to railway embankment



Capping beam with landside formwork



Rail capping beam (3m drop on other side)



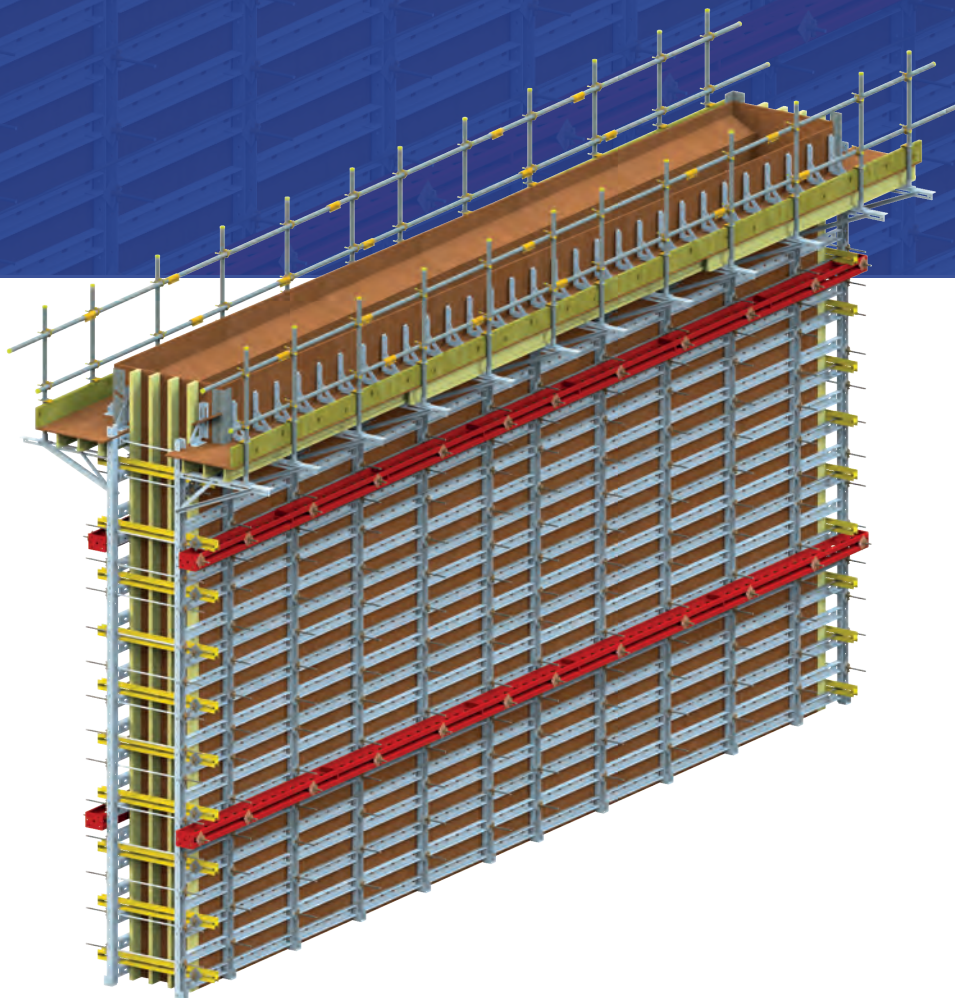
Capping beam with angles and mix of land and river sides



WHATEVER THE JOB WE CAN DESIGN A SOLUTION FOR YOU!

S A F E R ■ F A S T E R ■ G R E E N E R ■ S U S T A I N A B L E

# FAST-FORM™ COMPLETE WALL FORMWORK SOLUTION



Fast-Form™  
  
s y s t e m s

# FAST-FORM WALL SYSTEM OVERVIEW AND COMPONENTS

Fast-Form is the perfect solution for all types of wall and column formwork, our unique patented design offers all the strength of a steel panel system with the flexibility and ease of use of a hand fit system and the finish of a traditional timber system. Full structural calculations and full colour 3D temporary works drawings are included.

Unlike panel systems Fast-Form has no unsightly joints so is ideal for fair faced finishes F5, F6 or better.

The same components can also be used for straight, radius and single sided walls and columns.

Our unique system needs NO KICKERS, each section can be adjusted for uneven ground and can also be angled because of its unique adjustable feet that bolt down to the slab.

Our system comes in a range of sizes and widths and unlike panel systems it does not need any timber infills or have hundreds of components to lose or damage.

You can erect our system by hand to almost any height but can also move it in large panels once erected just like a panel system, you can join our uprights to over 6.4m, optional lifting attachment / lifting eyes, waler beams, corners and corner bracings also available as well as all accessories such as props, tie bars and consumables.

Our unique tie holes ALWAYS line up and you need less ties than most panel or timber systems, meaning less remedial works, we can pour to 1.8m with no form ties.

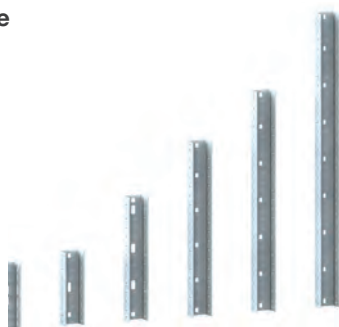
The unique way our system is assembled means we can add or move pieces to accommodate for pipes / openings or to strengthen the system for single sided pours with NO A-FRAMES!

Our system also comes in a choice of our lightweight galvanised steel or super lightweight aluminium.

## Heights Available

### Jointing Section

- .80m
- 1.35m
- 1.9m
- 2.4m
- 3.2m



## Widths Available (Less than 450mm needs no horizontals)

- 450mm
- 600mm
- 900mm
- 1220mm



### Corner Brace



### Water Beam



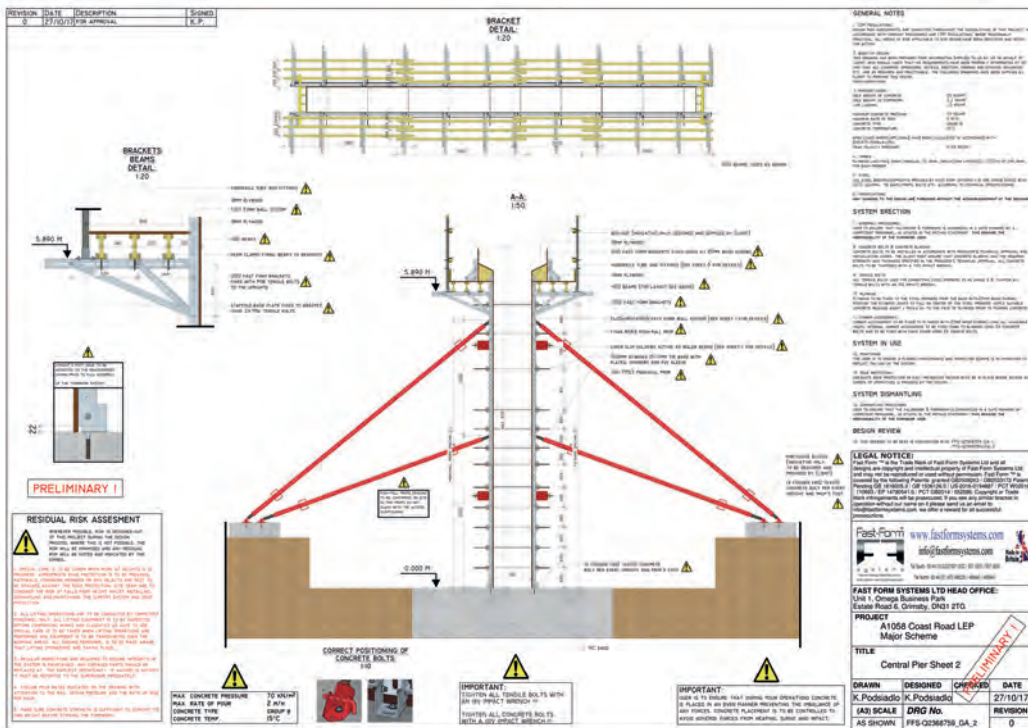
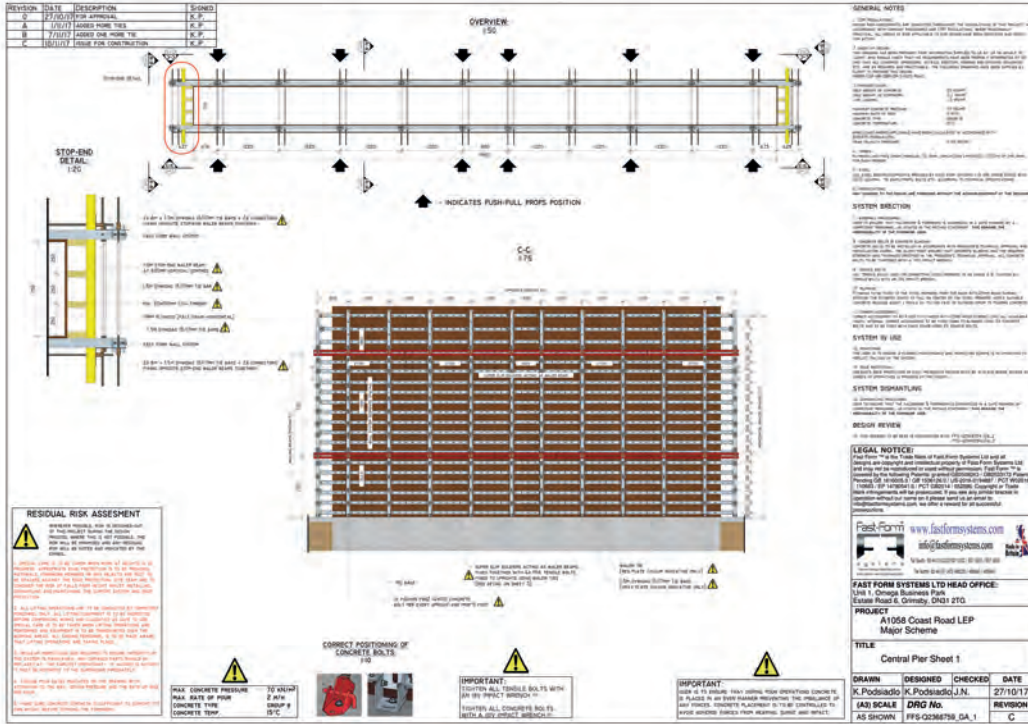
### Lifting Attachment



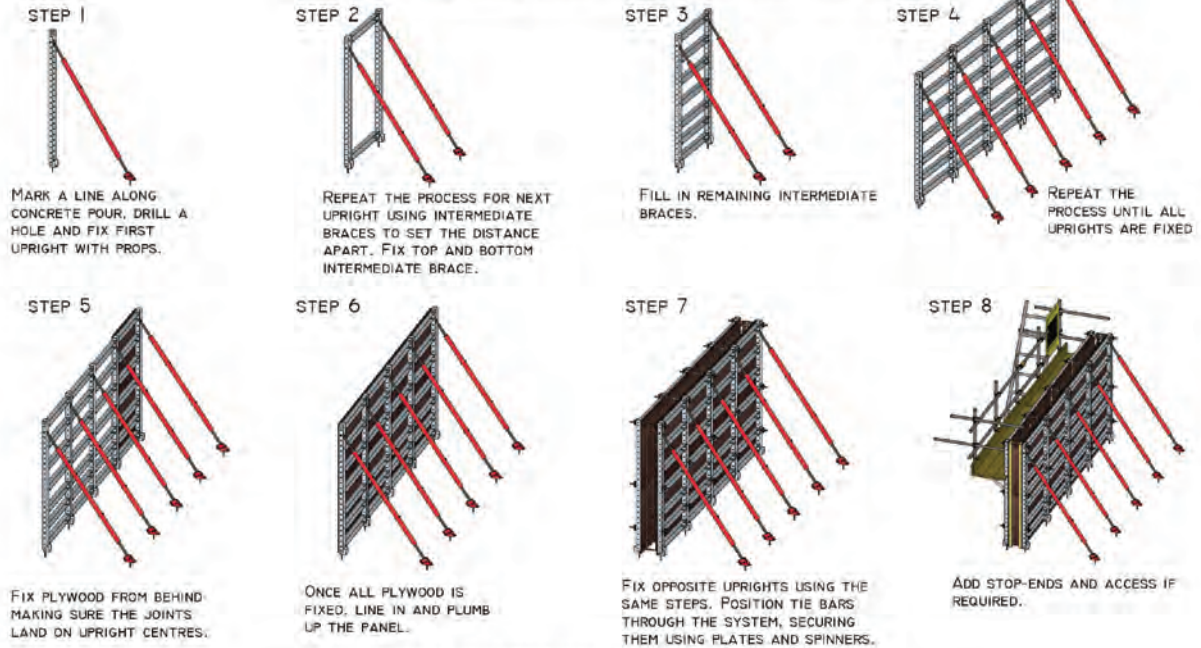


# SAMPLE WALL DRAWINGS

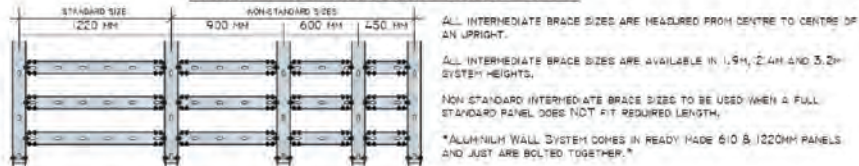
6m high motorway central pier wall 12m long, single pour with shaped top



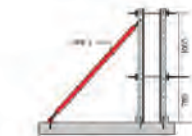
WALL SYSTEM (DOUBLE SIDED) - QUICK INSTALLATION GUIDE



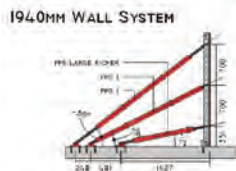
UPRIGHT INTERMEDIATE BRACE SIZES



DOUBLE SIDED WALL SYSTEM - (TIE BAR ARRANGEMENT SHOWN)



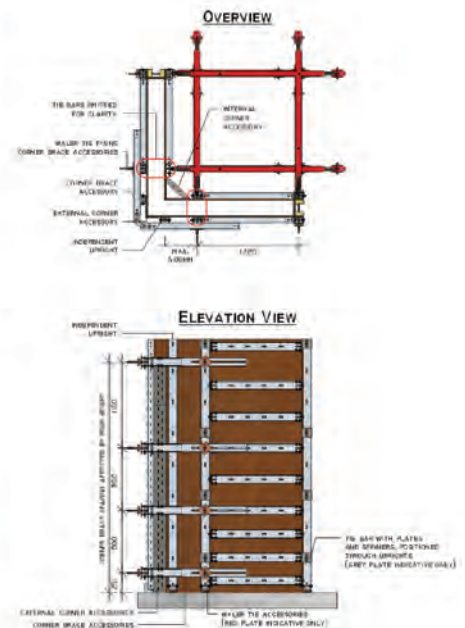
SINGLE SIDED WALL SYSTEM - (PROPS ARRANGEMENT SHOWN)



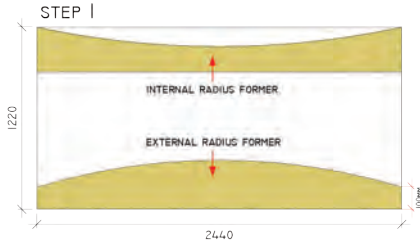
INTERMEDIATE BRACE SPACING



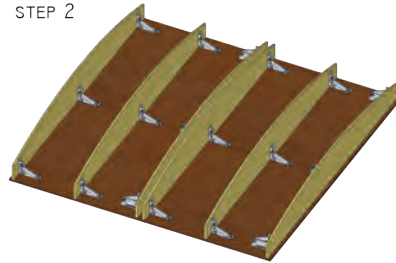
WALL SYSTEM (DOUBLE SIDED) - TYPICAL CORNER



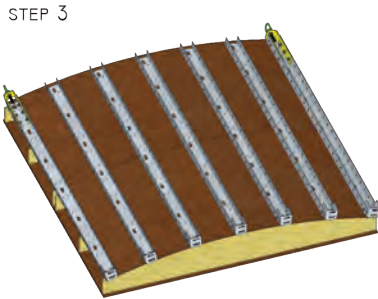
**RADIUS WALL SYSTEM - QUICK INSTALLATION GUIDE**



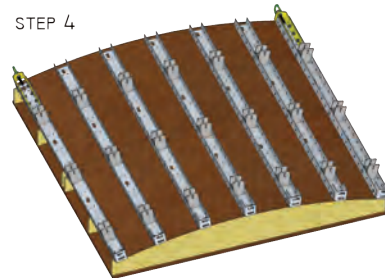
MARK OUT SEVERAL INTERNAL/EXTERNAL RADIUS FORMERS ON A SHEET OF PLYWOOD, LEAVING 100MM AT EDGES. CUT WITH JIGSAW.



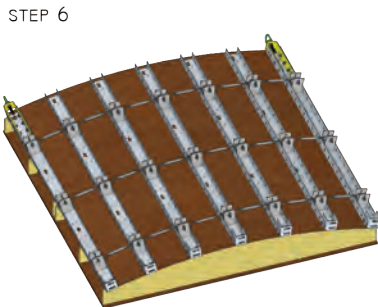
USE FAST FORM A-A BRACKETS TO FIX RADIUS FORMERS TO A FLOOR OR PLYWOOD SHEETS. MAKE SURE FORMERS ARE FIXED SO THEY WILL BE SUPPORTING PLYWOOD AT THE EDGES AND CENTRE, SEE DETAIL 1 BELOW.



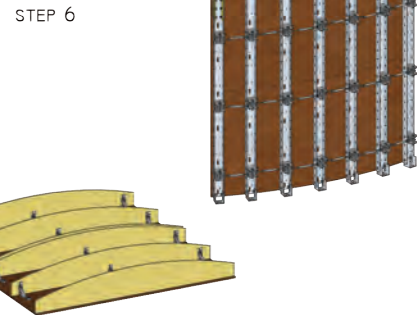
LAY PLYWOOD SHEETS ON THE TEMPLATE. FIX FAST FORM UPRIGHTS USING FANG BOLTS WHERE INDICATED. FIRST AND LAST UPRIGHTS TO BE BOLTED WITH LIFTING ACCESSORY & LIFTING EYE.



FIX RADIUS ADJUSTER PLATES TO UPRIGHTS.

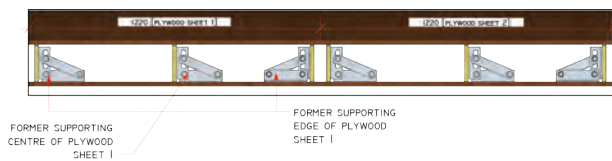


FIX TURNBUCKLES TO RADIUS ADJUSTER PLATES. TIGHTEN TURNBUCKLES UNTIL THEY ARE FULLY LOCKED OFF.

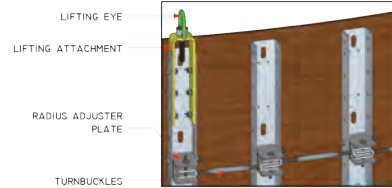


LIFT AND REPEAT STEPS FOR NEXT PANELS.

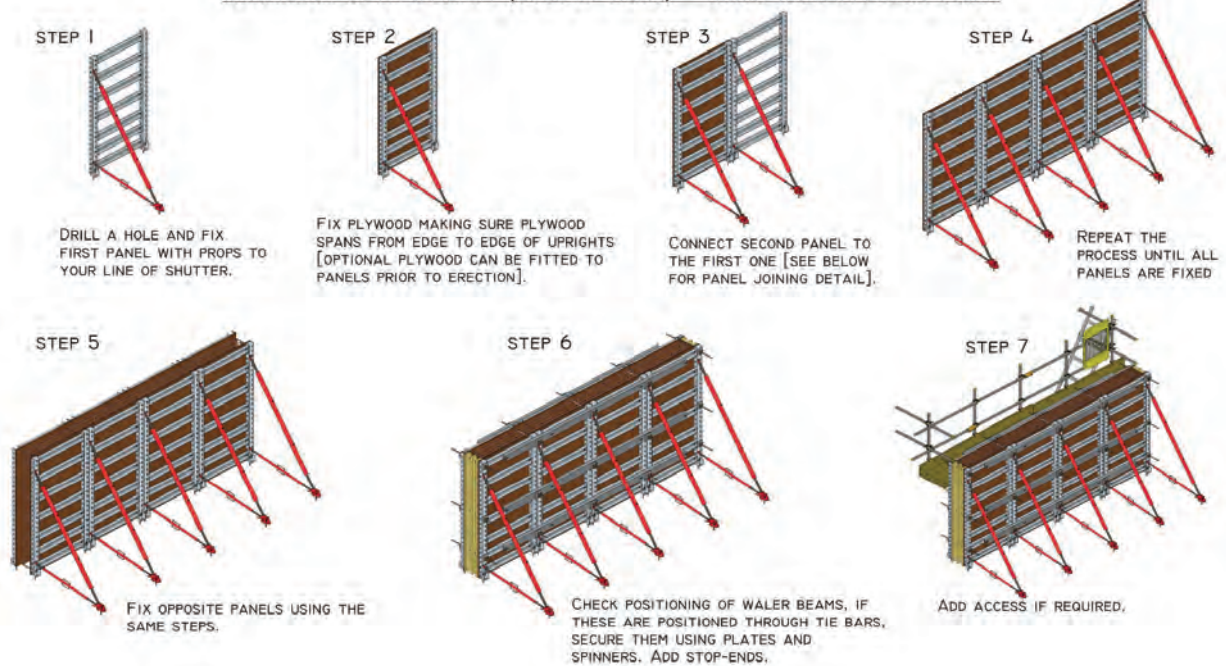
DETAIL 1



DETAIL 2



ALUMINIUM WALL SYSTEM (DOUBLE SIDED) - QUICK INSTALLATION GUIDE

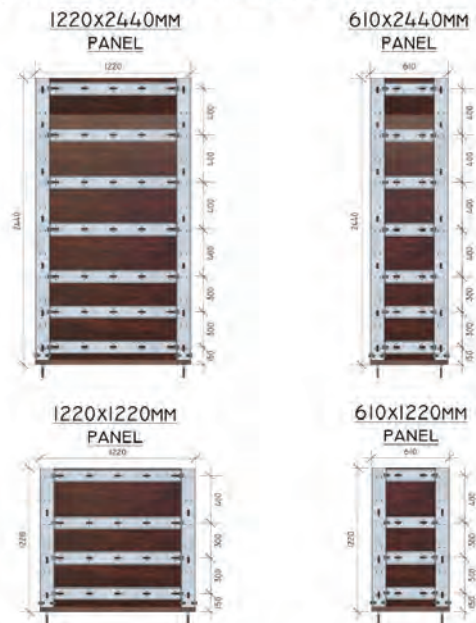


ALUMINIUM PANEL JOINING DETAIL

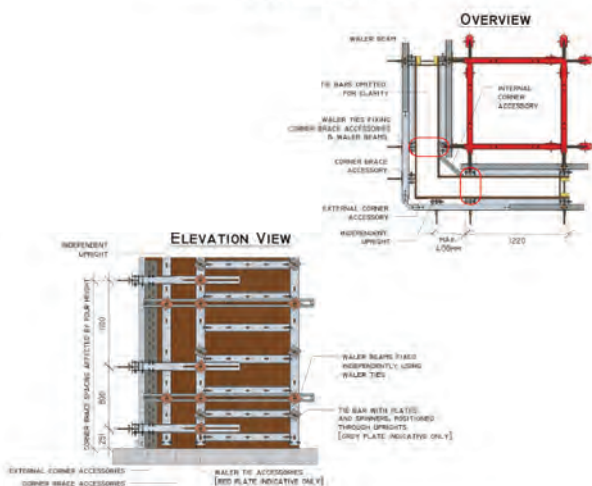


- ADDITIONAL M16x35MM TENSILE BOLT USED TO JOIN ALUMINIUM PANELS TOGETHER
- M16x140MM BOLT INDICATING POSITIONING OF KICKER PROP (OMITTED FOR CLARITY)
- M16x35MM TENSILE BOLT JOINING TWO FEET TOGETHER
- 1x CONCRETE BOLT PER UPRIGHT'S FOOT

ALUMINIUM WALL SYSTEM PANEL RANGE (INTERMEDIATE BRACE SPACING SHOWN)



WALL SYSTEM (DOUBLE SIDED) - TYPICAL CORNER



ALUMINIUM JOINING CHANNEL



ALUMINIUM JOINING CHANNEL IS USED TO FIX PANELS TOGETHER TO INCREASE FOUR HEIGHT.

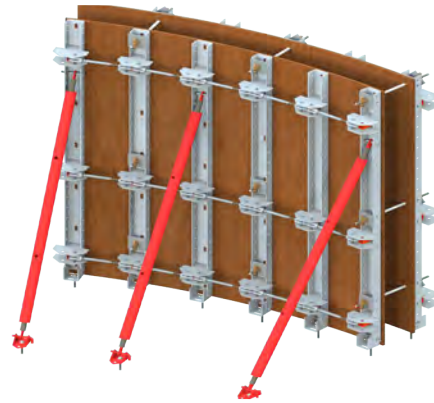
PLEASE NOTE THIS GUIDE IS NOT TO BE USED FOR CONSTRUCTION ALWAYS ASK FOR A DETAILED, CERTIFIED CONSTRUCTION DRAWING BEFORE ASSEMBLING YOUR SYSTEM

## WALL SYSTEM USES 3D

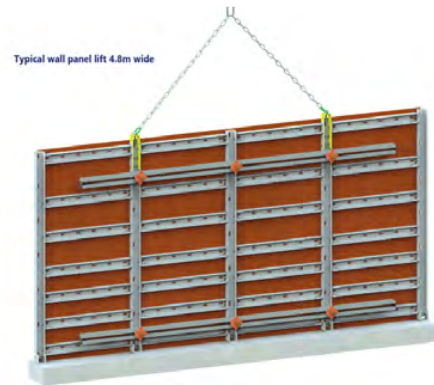
2.4m wall system with full access and handrails



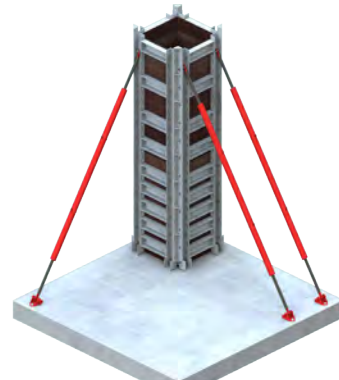
Radius wall system from same wall components as straight walls



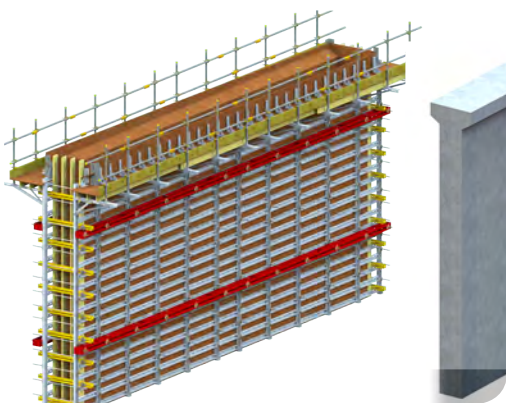
Lifting in large panels using our waler beams and lifting eyes



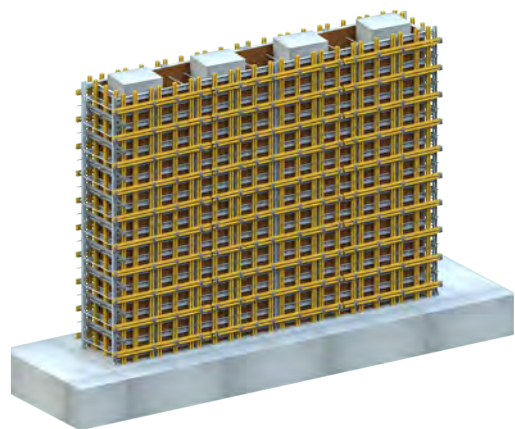
Columns from 200mm wide and from 1.9m to 6.4m high



6.4m high Motorway central pier with access and shaped top using FF brackets



M6 Smart motorway 6m full height bridge encapsulation



**DRAWINGS AND CALCULATIONS ARE AVAILABLE IN METRIC AND IMPERIAL MEASUREMENTS**

## **WALL SYSTEM IN USE**

6.4m high hand fit for Google, London



3.2m walls, columns and ribs



2.4m wall system for cow sheds in Lincolnshire, no props



1.9m wall system in use on windfarm control building



6.4m high motorway central pier with access

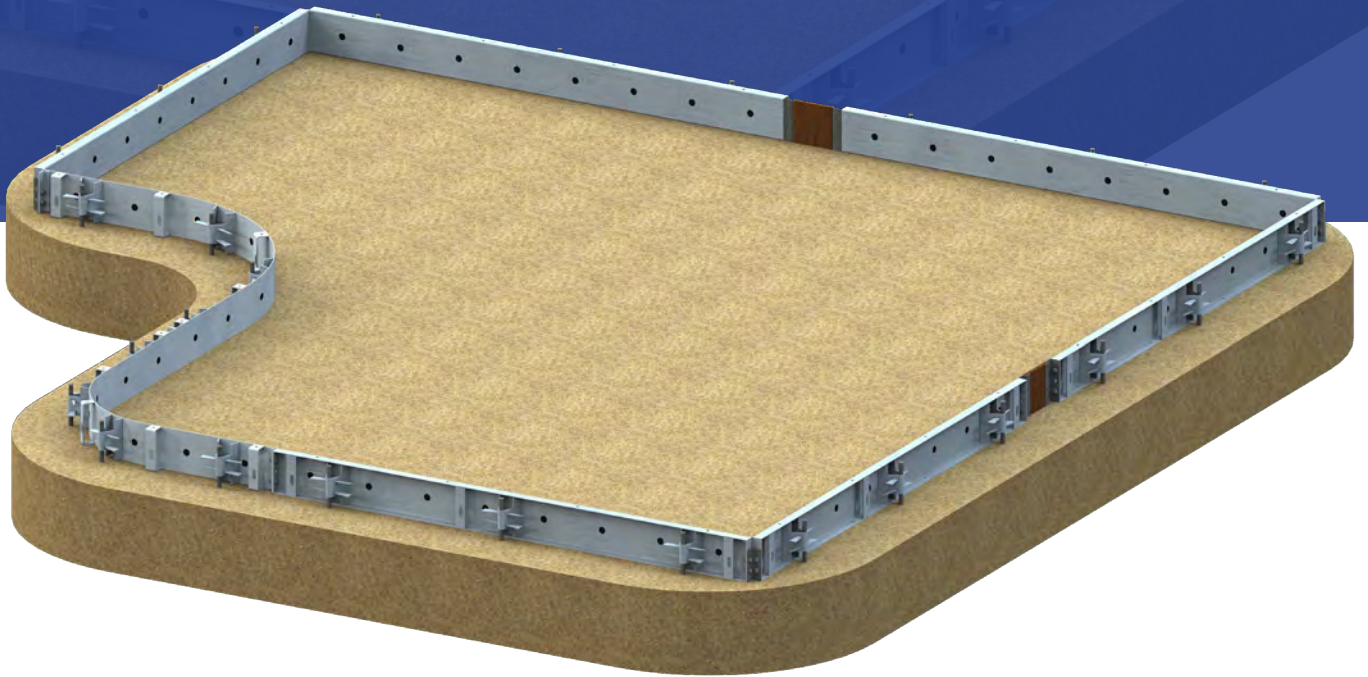


1.9m / 2.4m and 3.2m in use on retaining wing wall

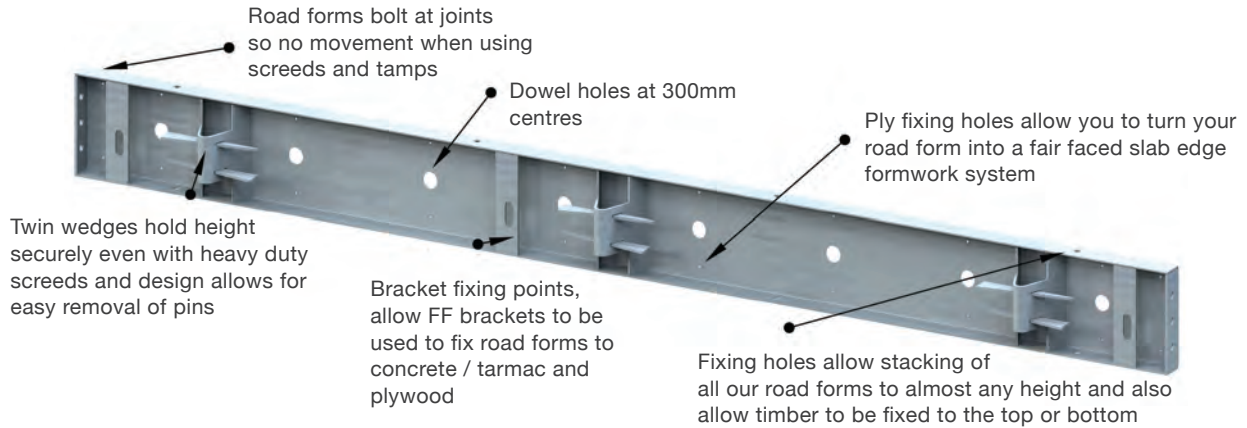


**WHATEVER THE JOB WE CAN DESIGN A SOLUTION FOR YOU!**

# ROAD FORM SYSTEM



## ROAD FORM SYSTEM FEATURES



Our unique road form is unlike any other road form on the market and we offer hire and sales, the Fast-Form Road Form is most flexible, versatile and most robust road form available.

Our road forms also work with Fast-Form™ Brackets, which allows them to be fixed to any surface.

No more battered / old / bent / rusty road forms, choose the galvanised Fast-Form Road Form and get much more than just a road form.

Our unique end joining / bracket fixing and patented Wedge Holders make the road form stronger and more robust, so it won't bend, warp or buckle.

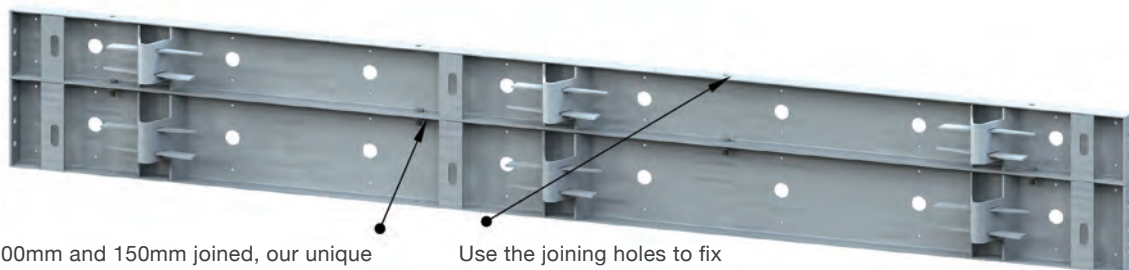
How many times have you hired a road form to find it looks like a piece of bent scrap metal?

Fast-Form Road Forms are made from galvanised steel we offer mild steel versions for sale as well.

Our road forms are available for hire or sale, if you buy our road forms and need a few extra for a job, then just hire a few extra road forms from us, or keep your costs low and just hire our road forms for all your jobs.

Available in straight or flexi versions with or without dowel holes, 100mm, 150mm and 200mm in height with ability to join means you can have 100 / 150 / 200 / 250 / 300 / 350 and 400mm + road forms.

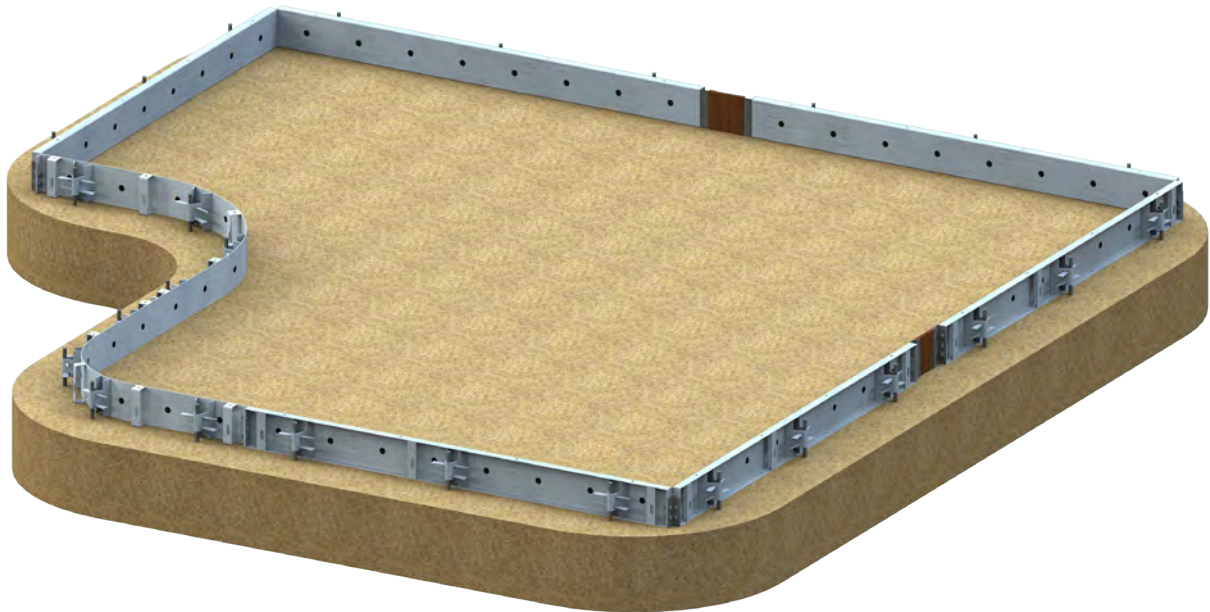
Unique Double Wedge with cut away means easy removal of pins, but strong holding of height and line.





## ROAD FORM SYSTEM BENEFITS

- Made from galvanised steel, they are stronger than any other road form with larger pin braces made to strengthen the road form and protect them from damage.
- Straight or curved road forms available in three heights: 100mm / 150mm and 200mm high which can be joined, no other road form can be joined in this way.
- Fast-Form Road Forms come in 2.44m lengths the same as standard ply sheets and they can have ply fitted to the face for a better finish, this also allows you to extend the pour height by up to 100mm.
- Unique infil system also copes with any length so you don't have to fly past your pour.
- 90 degree corner joining make it unique for slab pours with solid corner joints that won't move.
- Fast-Form™ Brackets fitted for extra stability and adjustment and the option to fit to any type of surface.
- Road forms can be joined end to end and are bolted together so no movement at joints! Much stronger than any other road form and ideal for using heavy duty and roller screeds.
- Road forms as well as road pins and road form pin pullers are available for hire or sale.
- The most cost effective road form on the market, flexible and durable buy British and buy once!



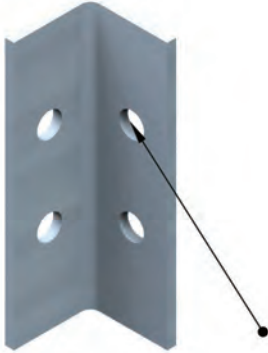
### LEGAL NOTICE:

Fast-Form™ is the Trade Mark of Fast-Form Systems Ltd and all design, copyright and intellectual property belong to the company.

Fast-Form™ is covered by the following Patents: Granted GB2508263 / GB2533172 Pending GB 1616005.3 / GB 1506126.0 / GB2539371 / EP 3169857/ EP3042009 / CA2957857 / US20160194887 / US20170292280.

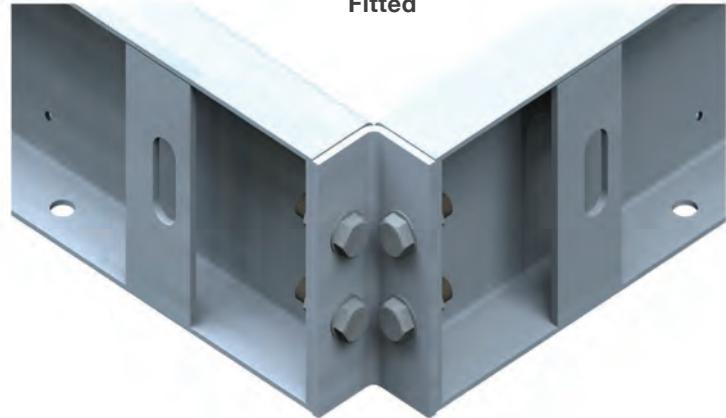
## ROAD FORM SYSTEM ACCESSORIES

90 Degree Corner

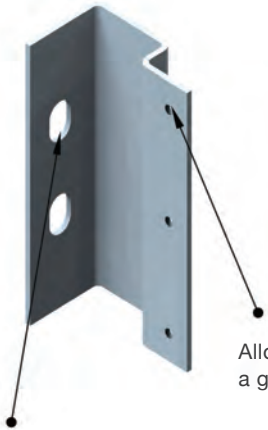


Allows road forms to be joined into 90 degree corners

90 Degree Corner Fitted



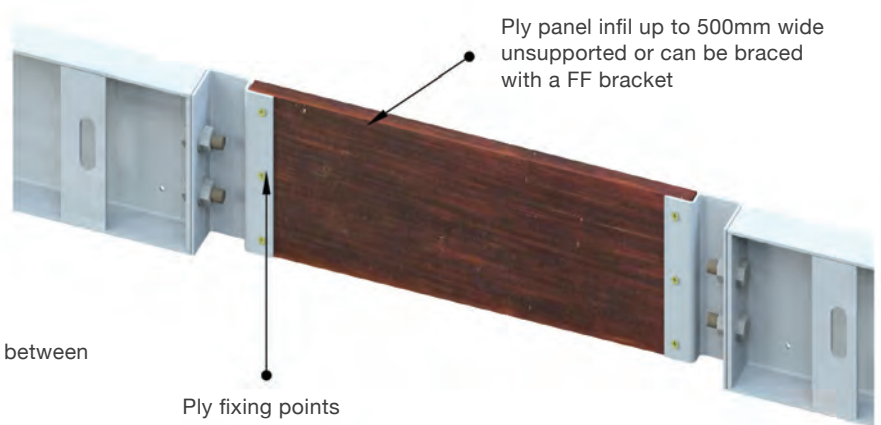
Infil Panel Fitting



Allows ply to be fitted between a gap in 2 road forms

Allows fitting to either side of gap

Infil Panel Fitted



Ply panel infil up to 500mm wide unsupported or can be braced with a FF bracket

Ply fixing points

Pin Puller



Also available are 16mm to 25mm road pins / pin pullers as well as bespoke sizes and shapes made to suit, whatever you need please just ask.

Chemicals, release agents, water bars, sealers, retarders, chamfers, tie bars, tubes, plates, nuts and all other formwork accessories and tools are also available.

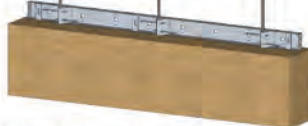
**ROAD FORMS QUICK INSTALLATION GUIDE USING ROAD PINS**

STEP 1



MARK A LINE OF POUR WITH A STRING TO GET A STRAIGHT PROFILE. POSITION FIRST ROAD FORM PAN.

STEP 2



POSITION ROAD PINS BETWEEN PIN BRACES AND WEDGES. DRIVE THEM INTO GROUND USING INSULATED LUMP HAMMER OR SLEDGE HAMMER.

STEP 3



TIGHTEN THE GRIP ON THE ROAD PINS BY TAPPING IN THE WEDGES. REPEAT THE PROCESS UNTIL ALL ROAD FORM PANS ARE FIXED. [SEE BELOW FOR 'JOINING/STACKING' & ROAD FORM ACCESSORIES INSTRUCTIONS]

BE SURE TO CHECK GROUND SURVEY DRAWINGS AND CARRY OUT CAT SCAN TO LOCATE UNDERGROUND SERVICES BEFORE DRIVING PINS INTO THE GROUND

**ROAD FORMS QUICK INSTALLATION GUIDE USING FAST FORM BRACKETS**

**USING ROAD FORMS ON CONCRETE BLINDING**

STEP 1



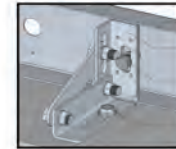
MARK AND DRILL A HOLE FOR CONCRETE BOLT BY POSITIONING BRACKET IN FRONT OF ROAD FORM. ATTACH BRACKET TO ROAD FORM [SEE DETAIL 1].

STEP 2



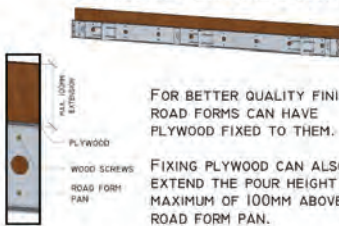
FIX ALL BRACKETS TO ROAD FORM BEFORE FIXING ADDITIONAL ROAD FORM PANS TOGETHER [SEE BELOW FOR 'JOINING/STACKING' & ROAD FORM ACCESSORIES INSTRUCTIONS]

DETAIL 1



ROAD FORM PAN  
FAST FORM BRACKET  
1x M16x35MM TENSILE BOLT JOINING BRACKET WITH ROAD FORM PAN  
CONCRETE BOLT SECURING BRACKET IN PLACE

**FIXING PLYWOOD DETAIL**



FOR BETTER QUALITY FINISH ROAD FORMS CAN HAVE PLYWOOD FIXED TO THEM.

FIXING PLYWOOD CAN ALSO EXTEND THE POUR HEIGHT BY MAXIMUM OF 100MM ABOVE ROAD FORM PAN.

**USING ROAD FORMS ON DECKING**



ROAD FORMS CAN BE USED ON DECKING BY FIXING THEM WITH BRACKETS WHICH CAN BE SCREWED TO DECKING - SEE STEPS ABOVE ON HOW TO FIX ROAD FORM WITH BRACKETS. [SEE DETAIL 2 FOR BRACKET FIXING DETAIL]

DETAIL 2



ROAD FORM PAN  
FAST FORM BRACKET  
1x M16x35MM TENSILE BOLT JOINING BRACKET WITH ROAD FORM PAN  
WOOD SCREWS SECURING BRACKET IN PLACE

**ROAD FORMS STACKING DETAIL**



ROAD FORMS CAN BE STACKED ON TOP OF EACH OTHER TO INCREASE POUR HEIGHT. THEY ARE SECURED USING 4x M12x35MM BOLTS. THE BOLTS MUST BE WELL SECURED AND TIGHTENED USING A SPANNER.



TOP ROAD FORM  
M12x35MM TENSILE BOLT JOINING ROAD FORMS TOGETHER  
BOTTOM ROAD FORM

**ROAD FORMS JOINING DETAIL**

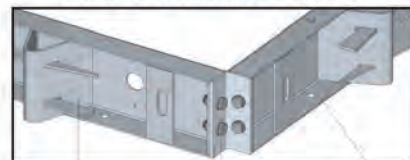


ROAD FORM 1  
2x M12x35MM TENSILE BOLT JOINING ROAD FORMS TOGETHER  
ROAD FORM 2

ROAD FORMS CAN BE JOINED TOGETHER USING 2x M12x35MM TENSILE BOLT. THE BOLTS MUST BE WELL SECURED AND TIGHTENED USING A SPANNER.

**ROAD FORMS ACCESSORIES**

**ROAD FORM CORNER ACCESSORY**



ROAD FORM 1  
CORNER ACCESSORY  
4x M12x35MM TENSILE BOLT FIXING ROAD FORMS TOGETHER [TIGHTEN WITH SPANNER]  
ROAD FORM 2

**ROAD FORM INFILL PANEL ACCESSORY**

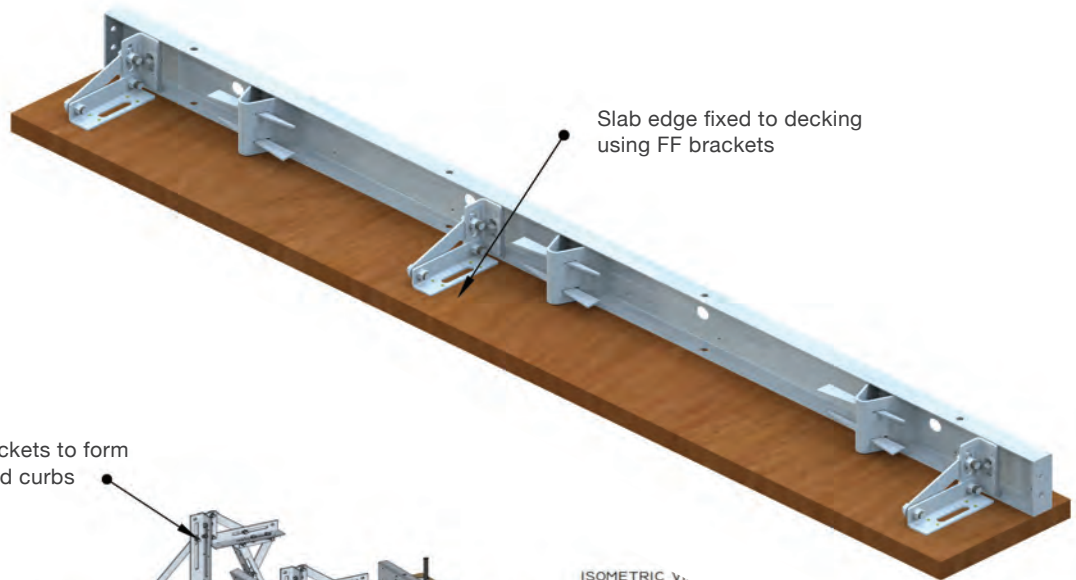


ROAD FORM INFILL PANEL ACCESSORY CAN BE USED TO MAKE UP DISTANCE REQUIRED WHERE ROAD FORM PAN IS TOO BIG TO BE USED.

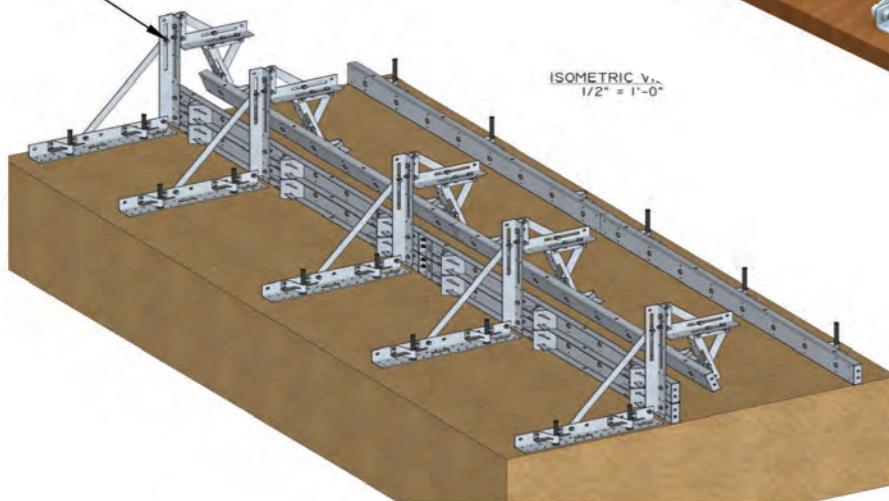
PLEASE NOTE THIS GUIDE IS NOT TO BE USED FOR CONSTRUCTION ALWAYS ASK FOR A DETAILED, CERTIFIED CONSTRUCTION DRAWING BEFORE ASSEMBLING YOUR SYSTEM



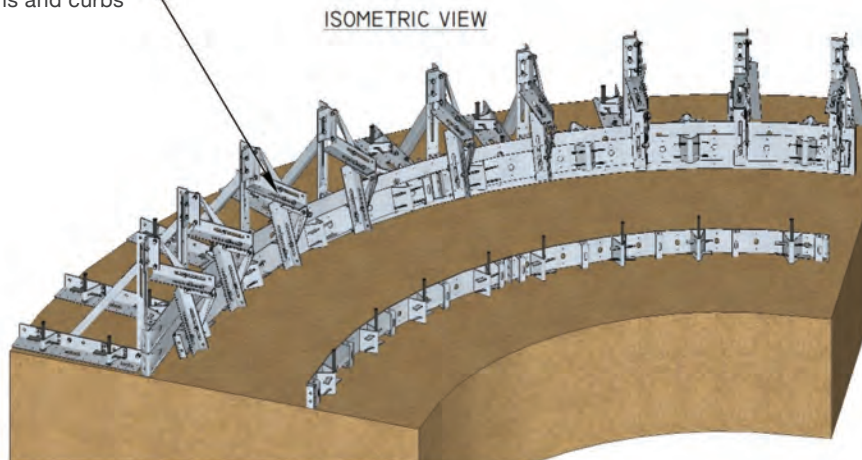
## ROAD FORM SPECIAL USES



With brackets to form paths and curbs



With brackets to form curved paths and curbs



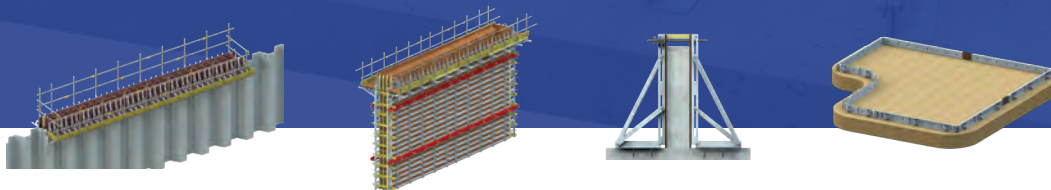
## ROAD FORM IN USE



## PLAIN STEEL VERSION WITH STRAIGHT / RADIUS, CORNER AND INFILLS IN USE



S A F E R ■ F A S T E R ■ G R E E N E R ■ S U S T A I N A B L E



ONE SYSTEM • ENDLESS POSSIBILITIES



ONE SYSTEM • ENDLESS POSSIBILITIES

## New Zealand and Australia

### Canzac Limited

3 Parkhouse Road Sockburn Christchurch New Zealand  
P.O Box 3181 Christchurch New Zealand

Phone: +64 3 343 4254 Fax: +64 3 343 4237

General Enquiries Email: info@canzac.com

Orders Email: orders@canzac.com

Account Queries Email: accounts@canzac.com

### Accreditation and Awards



**CANZAC**<sup>®</sup>  
Under Slab - In Slab - On Slab<sup>®</sup>



**0800 422 692**  
www.canzac.com