

TWO SIDED CAPPING BEAM ERECTION STEP BY STEP GUIDE METHOD STATEMENT

NOTES:

THESE ARE STANDARD FITTING INSTRUCTIONS FOR THE FAST FORM CAPPING BEAM SYSTEM, YOU SHOULD BE ABLE TO COMPLETE ANY SIZE OR TYPE OF POUR FOLLOWING THESE:

1. START BY MARKING OUT THE HOLES FOR THE 2X TENSILE BOLTS (8.8 GRADE M16) CONNECTING SUPPORTING BRACKETS TOGETHER THROUGH SHEET PILING. DRILL THE HOLES USING A MAG DRILL WITH OIL FEEDER SECURING THE SAFETY CHAIN. THE HOLES SHOULD BE 0.5MM BIGGER THAN THE DIAMETER OF THE BOLT. REMEMBER TO TAKE INTO CONSIDERATION THE THICKNESS OF THE PLYWOOD THAT WILL BE ACTING AS THE FLOOR OF THE SHUTTERING FOR THE BEAM. ONE OF THE BOLTS HAS TO BE POSITIONED AT THE TOP OF THE SLOT OF THE VERTICAL MEMBER TO PREVENT THE BRACKET FROM MOVING AWAY FROM THE DESIRED DESIGNED LEVEL. FOR MOST OF THE SHEET PILING SIZES IT IS POSSIBLE TO FIT IN 2 BRACKETS PER ONE SHEET OF SHEET PILING AND POSITION THEM AS CLOSE TO THE BENT CORNERS OF SHEET PILING AS POSSIBLE. **ALL TENSILE BOLTS SHOULD BE SECURED WITH AN IMPACT WRENCH.** CLIENT SHOULD ASSESS THE RISK AND PROVIDE A SAFE METHOD OF ACCESS FOR INSTALLATION OF FORMWORK.

2. REPEAT THE PROCESS OF FIXING THE BRACKETS THROUGH SHEET PILING FOR NEXT BRACKETS UNTIL THE POUR LENGTH IS COVERED. POSITION EXTRA BRACKETS ON EACH SIDE OF THE POUR TO ACCOMMODATE STOP-ENDS (DESIGNED BY CLIENT).

3. USE A TEMPLATE TO MARK OUT THE SHAPE OF THE RECESSES OF THE SHEET PILING AND USE A JIGSAW TO CUT OUT THE PLYWOOD. FIX THE PLYWOOD TO THE SUPPORT BRACKETS WITH WOOD SCREWS USING ALL AVAILABLE HOLES TO PREVENT THE PLYWOOD FROM DISLOCATING. USE A SILICONE SEALANT BETWEEN THE PLYWOOD AND THE SHEET PILING TO STOP ANY GROUT FROM LEAKING OUT OF THE SHUTTERING. REMEMBER TO POSITION ANY PLYWOOD JOINTS ON CENTRE OF THE BRACKETS. MAKE SURE THAT THERE ARE NO TRAP ENDS!

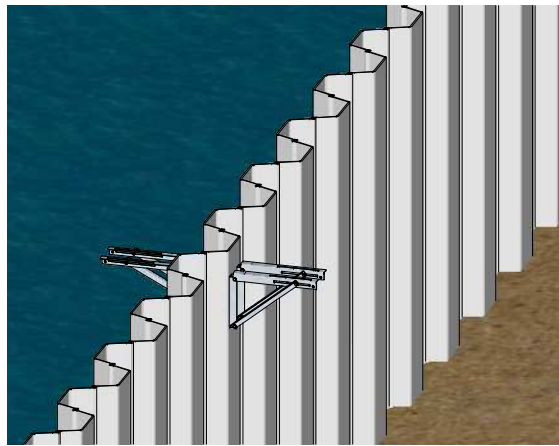
4. MARK THE LINE OF THE BEAM SHUTTERING TAKING INTO CONSIDERATION THE THICKNESS OF THE PLYWOOD AND POSITION THE SHUTTERING BRACKETS. MAKE SURE THAT ALL THE TOP BRACKETS ARE POSITIONED OVER THE SUPPORTING BRACKETS AND FIXED TOGETHER WITH 2X TENSILE BOLTS (8.8 GRADE M16)!

5. REPEAT THE PROCESS FOR ALL THE SHUTTERING BRACKETS. PLUMB THE BRACKETS AND TIGHTEN ALL THE BOLTS WITH AN IMPACT WRENCH

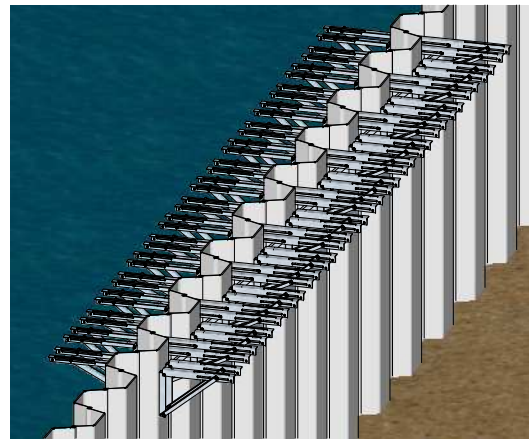
6. FIT ALL THE PLYWOOD TO FORM THE SHUTTERING FOR THE SIDES OF THE BEAM AND FIX USING WOOD SCREWS TO THE BRACKETS (FROM BEHIND) USING ALL AVAILABLE HOLES. WISAFORM MDO PLY, IF SUPPLIED BY FAST FORM SYSTEMS, THE LIGHT BROWN FACE IS THE FACE TO USE FOR THE CONCRETE SIDE, NOT THE DARK BROWN FACE. ALL PLY SHOULD BE SUITABLY OILED FOR EASY RELEASE AFTER CONCRETING.

7. ALL ACCESS TO BE ERECTED BY A COMPETENT PERSON AND TO BE INSPECTED AND RECORDED BY A COMPETENT PERSON EVERY 7 DAYS OR WHEN ALTERED.

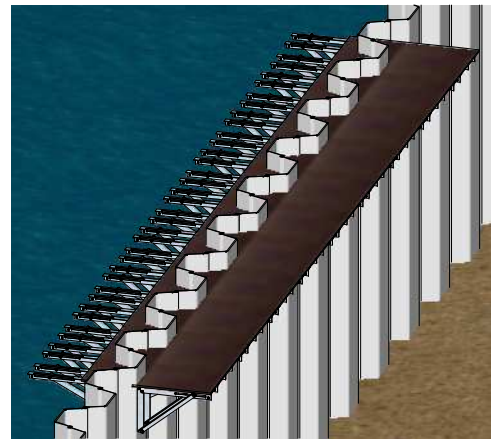
8. IF YOU HAVE ANY QUESTIONS, PLEASE CALL OUR OFFICE WE ARE HERE TO HELP.



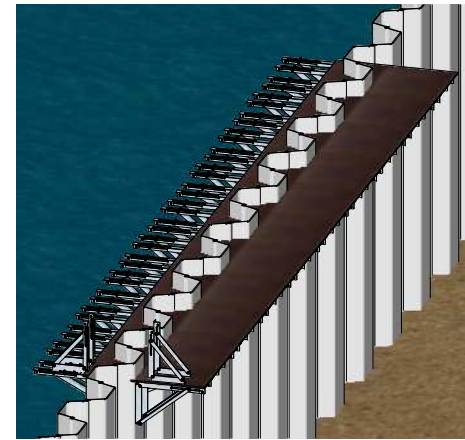
STEP ONE:
DRILL 2X HOLES IN THE SHEET PILE FOR EACH BRACKET PAIR AT DESIRED HEIGHT (REMEMBER TO TAKE PLY THICKNESS INTO CONSIDERATION WHEN DETERMINING THE LEVEL OF DESIGNED BEAM). OPPOSITE BRACKETS TO BE FIXED WITH BLIND/TENSILE BOLTS WITH ONE OF THE BOLTS POSITIONED AT THE TOP OF THE SLOT OF THE VERTICAL MEMBER. FOR EVERY SEGMENT OF SHEET PILE POSITION TWO PAIR OF BRACKETS AS CLOSE TO THE CORNERS OF SHEET PILING AS POSSIBLE.



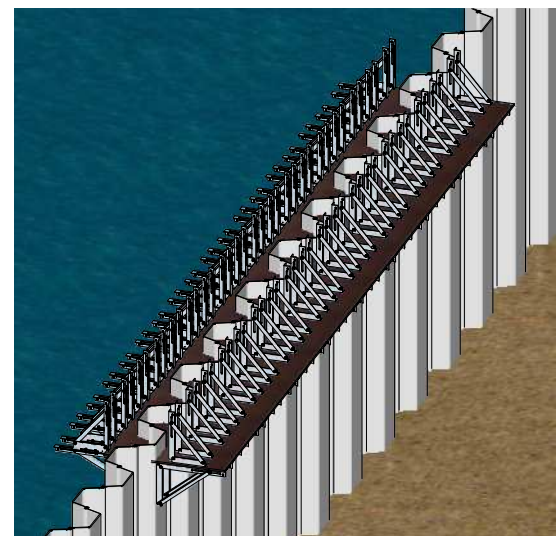
STEP TWO:
REPEAT THE PROCESS FOR NEXT BRACKETS UNTIL THE DESIRED POUR LENGTH IS COVERED. POSITION EXTRA BRACKETS EACH SIDE PAST THE POUR LENGTH TO ACCOMMODATE STOP-ENDS.



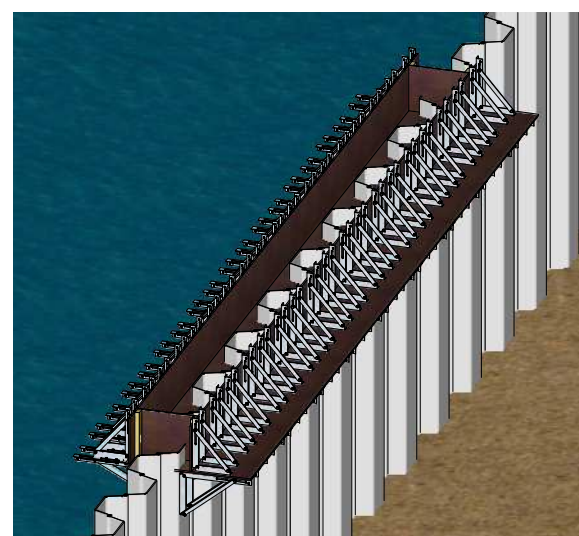
STEP THREE:
POSITION THE PLY ON THE BRACKETS AND FIX WITH 25MM WOOD SCREWS USING ALL AVAILABLE HOLES. COVER ONE SIDE WITH PLY IN FULL FOR ACCESS AND THE OTHER SIDE JUST ENOUGH TO ACCOMMODATE THE VERTICAL PLY.



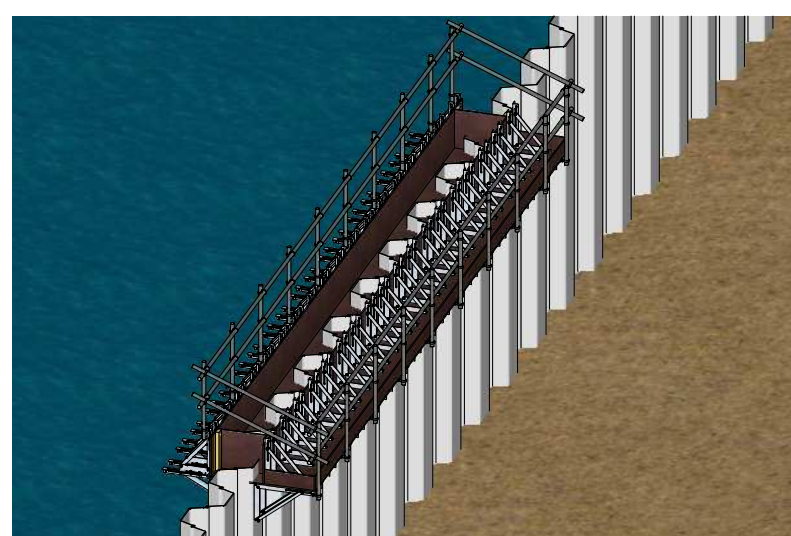
STEP FOUR:
START POSITIONING THE BRACKETS ON TOP OF ALREADY FIXED ONES. BRACKETS TO BE FIXED WITH EACH OTHER USING 2X TENSILE BOLTS.



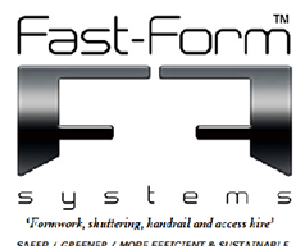
STEP FIVE:
REPEAT FOR NEXT BRACKETS UNTIL ALL ARE FIXED. PLUMB THE BRACKETS AND TIGHTEN ALL BOLTS.



STEP SIX:
FIT ALL PLY (FROM BEHIND) AND THE STOP-ENDS.



STEP SEVEN:
FIX HANDRAILS / ACCESS AS REQUIRED. USE TIE BARS IF ADVISED IN YOUR TECHNICAL DOCUMENTATION FOR YOUR ORDER.



www.fastformsystems.com

info@fastformsystems.com

Tel South: 00 44 (0) 0203 507 1832 / 507 1833 / 507 1834

Tel North: 00 44 (0) 1472 488230 / 488660 / 485640



Head Office:
Unit 1
Omega Business Park
Estate Road 6
Grimsby
N.E.Lincs
DN31 2TG

LEGAL NOTICE:

Fast Form™ is the Trade Mark of Fast-Form Systems Ltd and all copyright and intellectual property belong to the company. Fast Form™ is Patent granted, Patent number GB2508263 and is covered by a Worldwide Patent PCT/GB2014/052586 and further patent application No 1506126.0. Copyright or Trade Mark infringements will be prosecuted. If you see any similar bracket in operation without our name on it please send us an email to info@fastformsystems.com we offer a reward for all successful prosecutions.

Drawn By: Karol Podsiadlo

Date: 04/06/15

Rev: A

Designed by: Tony White

Drawing no: FFS-CBEG1

Project: Fast Form Capping Beam System

Drawing title: Two Sided Capping Beam Erection Step by Step Guide